

2013-2014 Referee Recert Test

2013-14 Grade 8 Recert

[Change](#)

Percentage	Attempts	Results	
Red keeper dives to stop a shot. While she is on the ground with the ball, you notice that she was hurt. You stop play and beckon the coach to come in. The correct restart is:	87%	486	Details
From a throw-in, the ball goes directly into the opponent's goal without being touched by another player. The correct restart is:	83%	483	Details
Blue #5 takes a goal kick. After the ball leaves the penalty area in the air, a gust of wind blows the ball back towards the goal. Blue keeper dives and misses while the ball goes into the goal. The correct restart is:	54%	483	Details
At a penalty kick, after you signal for the kick to be taken but before the ball is kicked, you notice that the keeper moves a couple of steps off the goal line. You allow the kick to proceed and the ball goes into the goal. The correct restart is:	97%	481	Details
While Red #3 is getting ready to take a throw-in in front of the white team's bench, a white substitute on the bench teases him on a mistake five minutes ago that caused the Red team a goal. Red #3 reacts by throwing the ball at the white substitute and hits him in the head. The correct restart is:	85%	481	Details
A defender takes a throw-in to his keeper. With the sun in his eyes, the White keeper misses the ball and it goes directly into the goal. The correct restart is:	75%	481	Details
Red #20 is ready to take a corner kick. White #31 pushes a Red attacker down inside the penalty area while jostling for position. You stop the corner kick and caution White #31 for unsporting behavior. The correct restart is:	96%	479	Details
On a cold day, players are allowed to wear tights same color as his team shorts but over his shorts.	89%	480	Details
A substitution is complete when the substitute enters the field with the permission of the referee but the departing player is still walking off to the bench.	42%	480	Details
The required distance for opponents on all restarts is at least ten yards away from the point of restart.	66%	482	Details

On a dropped-ball, the red team refuses to participate to protest your decision on the restart. You should continue with the dropped-ball.	97%	476	Details
A player has "interfered with play" and committed an offside violation if she is standing in an offside position in front of the goal area blocking the goal keeper's view of the ball but acts to avoid contact with the ball.	90%	475	Details
White #11 is in the offside position running towards the far post looking for a rebound when his teammate shoots the ball in at the near side of the goal. White #11 should be punished for being offside.	88%	474	Details
You want to keep the game on schedule and decide to start the game while the home team is filling up a sandbag to hold down the goal. This is acceptable.	95%	474	Details
Blue #12 swaps places and jerseys with her team's goalkeeper during play. Two minutes later, Blue #12 saves a hard shot on goal by punching the ball away with her hands just in front of the goal line. She has committed a handling offense.	63%	474	Details
An indirect free kick is given to the Red team just outside its goal area. The ball is in play as soon as it is touched by a second player.	68%	474	Details
You suspend the game because severe weather threatens play just as the goalkeeper takes possession of the ball inside his goal area. When play resumes, the location of the restart is anywhere in the goal area.	59%	473	Details
From a corner kick, attacking player Red #7 catches the ball by holding the bottom of his jersey out without touching the ball and then shoots the ball into the net. The goal is no good.	93%	473	Details
Red #6 was issued a red card for using offensive language before the game. The Red team must start the game with 10 players.	80%	472	Details
After you whistle to end the game, Blue #55 is cursing you with offensive language as he is walking off the pitch. Although the game is over, you show Blue #55 a red card and include the incident in your game report.	96%	471	Details
During a dropped ball on the goal area line, you instruct the defense to have a player on the goal line while the keeper participates in the dropped ball so that the attacker would not be placed in an offside position.	88%	469	Details
Having lines or markings for another sport on the artificial turf field is a violation of the Law even if the lines for the other sport are clearly of a different color.	91%	469	Details
Near the end of the first half, you call for a penalty kick. The kicking team cannot decide on who is taking the kick. As you look at the time, you proceed to cancel the kick instead of cautioning the kicking team for delaying the restart.	94%	468	Details
A goalkeeper is allowed to stand near the center circle during a kick off by the opposing team.	93%	468	Details

You may not change or correct any decision that a goal has been scored after you signal for the kickoff restart by pointing to the center circle.	73%	468	Details
A player takes a penalty kick. The ball rebounds from the crossbar, deflects off the keeper's shoulder to the kicker who heads the ball into the net. The correct restart is:	91%	468	Details
A Red defender heads the ball to her goalkeeper who takes possession of the ball with her hands while in her goal area to prevent opponents from challenging for the ball. You stop play. The correct restart is:	66%	468	Details
During a penalty kick, a ball kicked by a substitute of the defense while warming up by the bench hits the ball on its way towards the goal. The correct restart is:	87%	467	Details
Your assistant referee flags Red #11 for a careless tackle. After you stop play for this violation, Red #11 approaches and directs dissent at that assistant referee. You caution Red #11. The correct restart is:	80%	466	Details
A defender, angry at being outplayed by Red #9, picks up a rock several yards outside his penalty area and throws it at Red #9. It strikes Red #9 while he is a yard from the goal area line. The correct restart is:	64%	466	Details
Red #9 misplays the ball passed back by Red #2 and lets it go into the goal. Before you blow the whistle for the restart, Red #2 spits at his teammate for losing control of the ball. You blow the whistle and issue a red card to send off Red #2. The correct restart is:	92%	466	Details
A defender tackles the ball away from an opponent near the goal line. That defender then deliberately passes the ball forward to her teammates inside the penalty area. Her goalkeeper calls for the ball and runs to pick up the ball near the penalty mark. The correct restart is:	77%	465	Details
33. The goalkeeper comes off the goal line after you whistle for a penalty kick to be taken but before the ball is in play. The ball sails wide of the goal. The correct restart is:	95%	465	Details
A player asks for and receives permission to leave the field to have an ankle taped. While off the field and with play still occurring, he becomes engaged in a fight with an opposing substitute and is sent off. The correct restart is:	80%	465	Details
A player attempts to kick an opponent and misses. The correct restart is:	85%	465	Details
A Blue substitute runs onto the field during play and violently tackles an opponent in the Blue team's penalty area. You send him off with a red card. The correct restart is:	43%	465	Details
A Blue player who is temporarily off the field with your permission (having an ankle taped) suddenly runs back onto the field and violently tackles an opponent in the Blue team's penalty area. The correct restart is:	81%	465	Details
The Red goalkeeper is holding the ball in her hands in preparation for a punt. As she drops the ball to kick, an opponent unexpectedly sprints forward causing her	78%	465	Details

to miskick the ball. The correct restart is:

Red #10 tackles the ball fairly from White #2. After losing the ball, White #2 rolls around on the ground appearing injured. You stop the game to check on White #2 and realize that he is faking the injury in an attempt to get a foul call. You caution White #2 for simulation. The correct restart is:

66%

464

[Details](#)

Blue #41 shouts loudly at and from behind an attacker who is dribbling the ball just above the Blue team's goal area with only the goalkeeper to beat. The attacker stops play and picks up the ball expecting you call a misconduct on Blue #41. The correct restart is:

73%

464

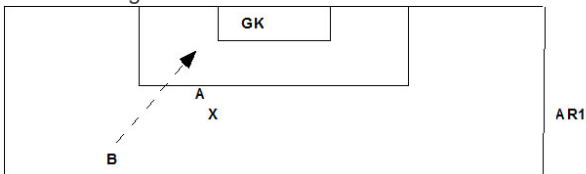
[Details](#)

Attacking player A is injured and lying on the ground inside the field of play. Another attacker B, defended by X, uses A as a pick and dribble around X towards the goal.

76%

463

[Details](#)

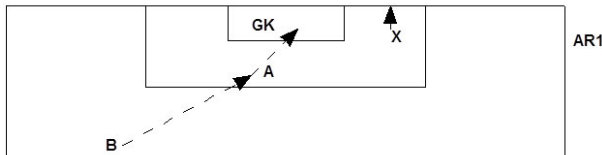


Defender X is injured. He rolls off the field of play to shake off the injury. Player B passes the ball to player A, who heads the ball, past the goalkeeper GK, into the net.

78%

463

[Details](#)

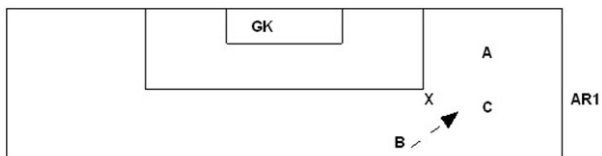


Player B passes the ball to teammate C who is being defended by player X. Player A is a teammate of B and C. Player A prepares himself to receive the ball if passed to him but remains stationary.

86%

463

[Details](#)

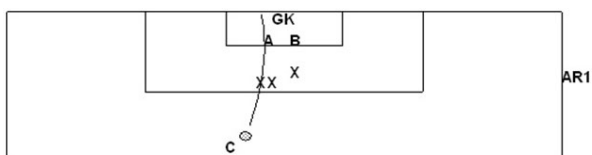


Players A and B are standing near the top of the goal area while a free kick is taken by their teammate, player C. Players A and B do not move and the free kick results in a goal.

78%

463

[Details](#)



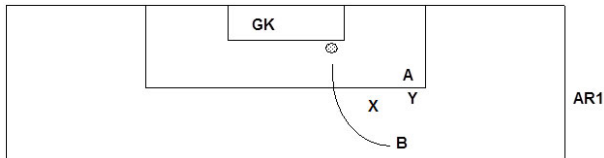
Players A and B are attackers. Players X and Y are defenders. Player B plays the

86%

463

ball past X (on the inside) and then runs around X (as shown below) onto the ball to play it again. Player A moves towards the ball after player B regains possession of the ball.

[Details](#)

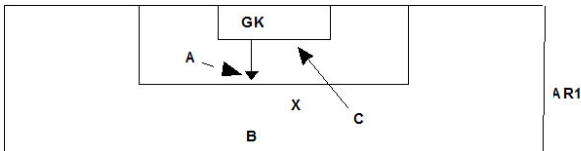


The ball was shot on goal by C. The goalkeeper blocks the shot, attacking player A came in to challenge.

89%

463

[Details](#)

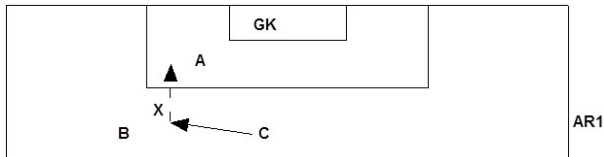


Players A, B, and C are teammates. Player X is a defender. Player C attempts to pass the ball to B but the ball is deflected by defender X to Player A.

81%

463

[Details](#)



The ball is in play on a free kick inside one's own penalty area when the ball is kicked and moves.

61%

463

[Details](#)

The ball is in play on a throw-in when the ball leaves the thrower's hands.

79%

463

[Details](#)

The ball is in play on a kick-off when the ball is kicked, moves, and is touched or played by another player.

73%

463

[Details](#)

The ball is in play on a dropped ball when the ball hits the ground and is played by a player.

64%

462

[Details](#)

The ball is in play on a goal kick when the ball is kicked and moves.

86%

462

[Details](#)

The ball is in play on a free kick outside the team's own penalty area when the ball is kicked and moves.

94%

462

[Details](#)

The ball never went into play on a kick-off if the ball was kicked and moves before the referee signals.

97%

462

[Details](#)

The ball is in play on a corner kick when the ball is kicked, moves, and leaves the corner arc.

60%

462

[Details](#)

The ball is in play on a penalty kick when the referee signals for the kick to be taken.	90%	462	Details
Any restriction in the Law on how close a player can be to the location of a restart goes away as soon as the ball is in play.	94%	462	Details
The ball is in play on a throw-in when the ball entirely crosses the width of the touchline.	48%	462	Details
The clock starts when you blow the whistle to signal for the kickoff.	53%	462	Details
The whistle to start a free kick is a signal that the defenders can challenge for the ball.	96%	462	Details
The taking of an indirect free kick closer than ten yards from the opposing team's goal is the only free kick situation in which opposing players could be closer than ten yards from the location of the restart.	87%	461	Details
The ball is in play on an indirect free kick when the ball is kicked, moves, and is touched or played by another player.	64%	461	Details
A player is guilty of interfering with the opponent and therefore guilty of offside if he does the following:	78%	461	Details
The goalkeeper takes a goal kick. It deflects from your back while you are standing inside the penalty area and leaves the field across the goal line, outside the goal. You should	70%	461	Details
For safety reasons, goals MUST be	94%	461	Details
A field player changes jerseys with the goalkeeper at a stoppage without informing you. When the new goalkeeper touches the ball with her hands a few minutes later, you realize the change was made. You should	70%	461	Details
You stop play for an injury that occurred inside the penalty area while the goalkeeper was holding the ball inside the goal area. When you are ready to resume the game, you should restart with a dropped ball	64%	460	Details
After a goal is scored and you signal a kickoff restart, the assistant referee informs you that there was an extra player on the field of play when the goal was scored. Your restart stands if	86%	460	Details
The rules for your match require a minimum of 7 players to start and to continue. While play is going on, a Blue player sprains his ankle and has to be looked at off the field, leaving the Blue team with fewer than 7 players on the field.	60%	460	Details
The jerseys of the two goalkeepers are the same color but different from the jersey color of either team. Neither has another jersey to change into. You should	65%	460	Details

You have awarded a direct free kick. Before the kick can be taken, time (including any allowance for time lost) runs out for the first half. You should	64%	459	Details
There is contact at mid-field between two opponents. You whistle to stop play for a foul by Red but signal for a free kick by the Red team. Before you can correct your error, the Red team takes a quick restart while the White team complains that you got that wrong. What should you do?	68%	459	Details
At a corner kick, opponents are required to be 10 yards from	84%	459	Details
You stop play at 40 minutes but are reminded by an assistant referee just as you are walking off the pitch that 45 minutes is the correct time for this game. You should	54%	459	Details
At a dropped ball, you have the authority to	82%	459	Details
During a penalty kick, Red #7 tries to confuse the goalkeeper with a slight lunge to one side after completing her run to the ball. She then kicks the ball to the right after seeing the goalkeeper dive to the left. The ball goes into the goal. You should restart play with a	49%	459	Details
At a penalty kick, Blue #11 approaches the ball to kick it but slips and falls on the wet grass. He barely manages to kick the ball forward. Immediately after this, an alert teammate, who had been standing just outside the penalty arc, runs up and kicks the ball into the goal. You should restart play with a	86%	459	Details
An attacker illegally enters the penalty area at a penalty kick and the ball is saved by the goalkeeper inside the goal area. For this offense by the attacker, you should	54%	459	Details
An attacking player, in an offside position, intercepts a pass from a defender intended for that defender's goalkeeper.	71%	459	Details
A defender kicks the ball back to his fullback but mis-kicks the ball into the air towards his own goal. In an effort to avoid an own goal, the goalkeeper use his hand to lift the ball over the crossbar behind the goal. The correct restart is	47%	459	Details
Blue #30 was cautioned in the 75th minute. After the game is over, he approaches you and insists on voicing loud disagreement with your decisions throughout the match.	72%	458	Details
A player carelessly jumps at an opponent.	59%	458	Details
After a foul call, a player holds on to the ball and refuse to give it to the opponent to restart.	90%	458	Details
Blue #12 handles the ball in an attempt to score a goal.	57%	458	Details
At a throw-in, an opponent jumps up and down three yards away from where the	45%	458	Details

thrower will put the ball back into play.

During a fast break one on one with an attacker inside the penalty arc, the goalkeeper dives and catches the attacker's foot as the attacker tries to push the ball pass him towards the goal.

77%

458

Details

A player scores a goal. In celebration, the player lifts up his shirt and covers his head while running towards the bench.

85%

458

Details

Red #5 received a caution before the game began. 20 minutes into the match, she charges an opponent using excessive force.

52%

458

Details

At a penalty kick, the goalkeeper illegally lunges off his line after having been warned previously about this violation.

83%

458

Details

Early in the first half of a competitive game, as an AR, you see a foul committed by a defender. You should

47%

458

Details

If you signal as shown below, you are indicating

100%

458

Details



You indicate to the referee that a substitution is requested by using the signal shown below. You should maintain this signal

69%

457

Details



If the ball passes out of the field across a touchline, immediately returns to the field, and play continues as though it hadn't left the field, you should signal with a vertical flag (as shown below) until acknowledged by the referee and then signal in the direction of the throw-in.

96%

458

[Details](#)



As an AR, your recommended position during play is

68%

458

[Details](#)

Players have occasionally used tape to keep their socks and shinguards up. In such cases, which of the following statements is correct?

65%

457

[Details](#)

Before a player can be cautioned for illegally handling a ball to prevent an opponent from gaining possession of it, you must decide that the player's action was both deliberate and blatant.

46%

457

[Details](#)

You do a dropped ball restart just outside the Red team's penalty area and, right after the ball hits the ground, Red #10 attempts to kick the ball to her goalkeeper. The ball instead goes directly into the Red team's net.

56%

457

[Details](#)

At a dropped ball restart, Blue #30 taps the ball several feet sideways as soon as it hits the ground. His teammate, Blue #43, rushes in and takes a shot on the Red team's goal which goes into the net.

97%

457

[Details](#)

After you drop the ball for a restart after an injury, the ball leaves the field without being touched by any player. The correct action is to retake the dropped ball.

97%

457

[Details](#)

Red #3 was in the offside position when his teammate sent the ball forward. White #10 tries to head the ball back up field but instead he heads the ball backward to where Red #3 is. Red #3 receives the ball and scores. Red #3 should be penalized for offside.

51%

456

[Details](#)